

Creation Science for Students

-Think Outside The Box -

Bethel Church (베델교회)
Sangmin Lee
March 9, 2019

A serene sunset scene over the ocean. The sun is a bright, glowing orb on the horizon, casting a long, shimmering reflection on the water and the wet sand in the foreground. The sky is a mix of deep orange, yellow, and dark blue, with a few birds silhouetted against the light. The overall mood is peaceful and contemplative.

By the grace of God

I am what I am...

1 Corinthians 15:10

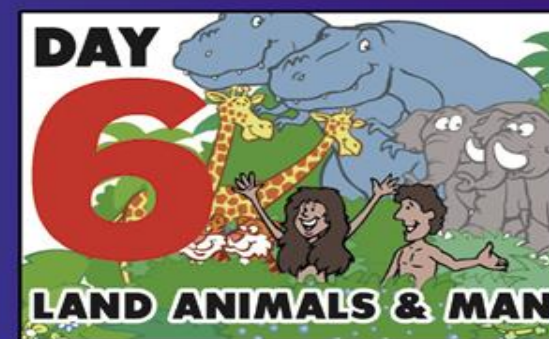
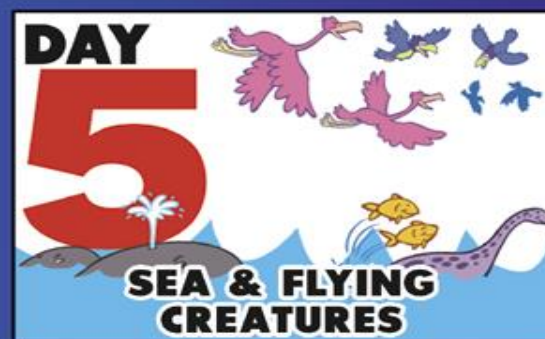
Creation Science for Students

-Think Outside The Box -

- 
- **Biblical Creationism/
What is Issue?**
 - **Limit of Science/Case Study**
 - **Social Impact**

In six days...

DAYS OF CREATION IN GENESIS ONE



Genesis Flood



Was It The Global Catastrophe? Then, There Must be Evidences: - Global strata, - Millions of Dead Things, - And Many others...

Image from Mike Riddle
Answers in Genesis

JESUS LOVES YOU!
THE BIBLE SAYS SO.

THE BIBLE
ISN'T TRUE!



WHERE DID CAIN GET HIS WIFE?
WHERE DO THE DINOSAURS FIT IN THE BIBLE?
HOW DO YOU KNOW THERE IS A GOD?
WHERE DID ALL THE RACES COME FROM
IF GOD CREATED ADAM AND EVE?



Later at home

I DON'T
KNOW.

I TOLD YOU
THE BIBLE'S
NOT TRUE!



DAD AND MOM, CAN YOU ANSWER
THESE PROBLEMS WITH THE BIBLE?
WHERE DID CAIN GET HIS WIFE?
WHERE DO THE DINOSAURS FIT IN THE
BIBLE? HOW DO YOU KNOW THERE IS
A GOD? WHERE DID ALL THE RACES
COME FROM IF GOD CREATED
ADAM AND EVE?



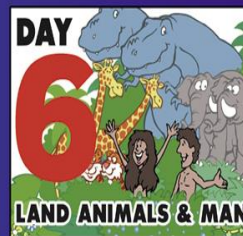
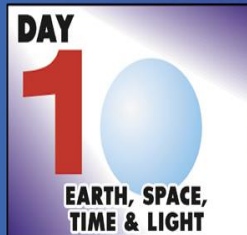
WE DON'T
KNOW ...



In six days vs Millions of years..

...About 15 billion years ago the universe exploded into existence out of nothing...

DAYS OF CREATION IN GENESIS ONE



© 2004 Answers in Genesis

BIG BANG

Where did the matter come from to go BANG?

What is issue?

Who is this man?

He was talking with a childhood friend one day ...:

“You know, they are fooling us, there is no God... I’ll lend you a book ... it will show ... the world and all living things are quite different from what you imagine, and all this talk about God is sheer nonsense.”

... Questioned about the book, He replied:

“Darwin. You must read it.”



Joseph Stalin
(1878 – 1953)

What is issue?

A Harvard professor says ...

As were many persons from Alabama, I was a born again Christian. When I was 15, I entered the Southern Baptist Church with great fervor and interest in the fundamentalist religion. I left at 17 when I got to the University of Alabama and heard about evolutionary theory.

E.O. Wilson, professor of sociobiology at Harvard University,
The Humanist, September, 1982, page 40.



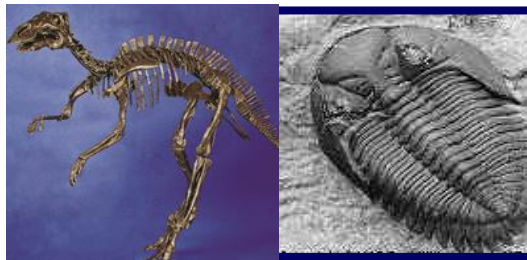
http://www.mcz.harvard.edu/Departments/Entomology/wilson_e_o.html

E.O. Wilson
(1929-)

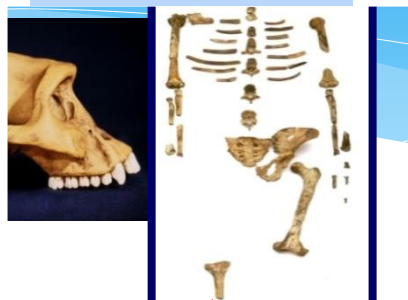
AIQ slide

Origins topics in Science

Paleontology



Anthropology



Biology



Geology



Astronomy



when...?
How...?
Who...?
...

Chemistry...
History...
Archaeology...
Radiometric dating..
.....

Creation? Or Evolution?

What the Bible says...

But in your hearts set apart Christ as Lord. Always be prepared to give an answer to everyone who asks you to give the reason for the hope that you have. But do this with gentleness and respect.

(너희 마음에 그리스도를 주로 삼아 거룩하게 하고
너희 속에 있는 소망에 관한 이유를 묻는 자에게는
대답할 것을 항상 예비하되 온유와 두려움으로 하고)

-1 Peter 3:15-



Creation Science for Students

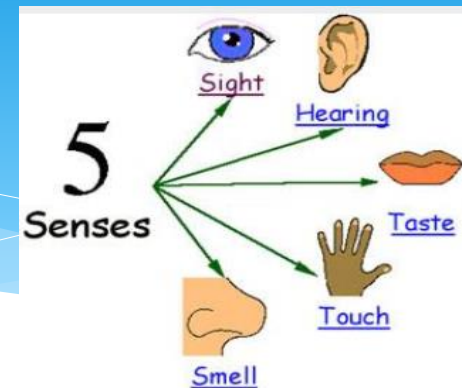
-Think Outside The Box -

- Biblical Creationism/
What is Issue?
- **Limit of Science**/Case Study
- Social Impact

Limit of Men's Ability

1 Samuel 16:7 : Man Looks at Outward...

- Space-bound: 5 Sensors → Limited Observation..
- Time-bound: Present ...



→ Depending on Indirect Info,
Such as, Education, Media, Rumor...

http://www.daviddarling.info/encyclopedia/V/vsible_light.html

Observation limit

Observation limit

Past

Criminal Trial,
History,
Hollywood/Disney,
...



<http://www.stacynelsonunlimited.com/blog/category/whole%20self/2>

Evolution Theory

Future

Weather Forecast,
Lottery,
Astrology,
Hollywood/Disney...

“You do not know what will happen tomorrow...”



It caught fire
during takeoff.
All 109 aboard
died.

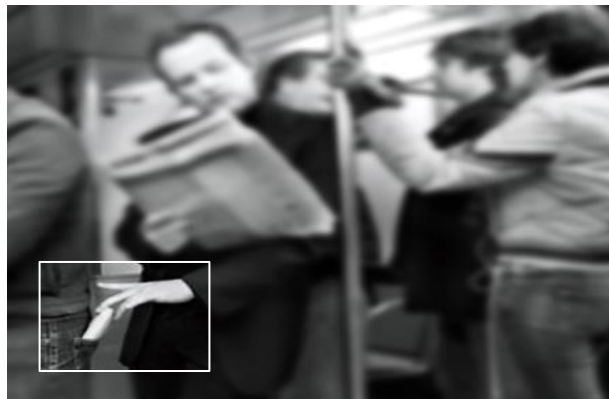
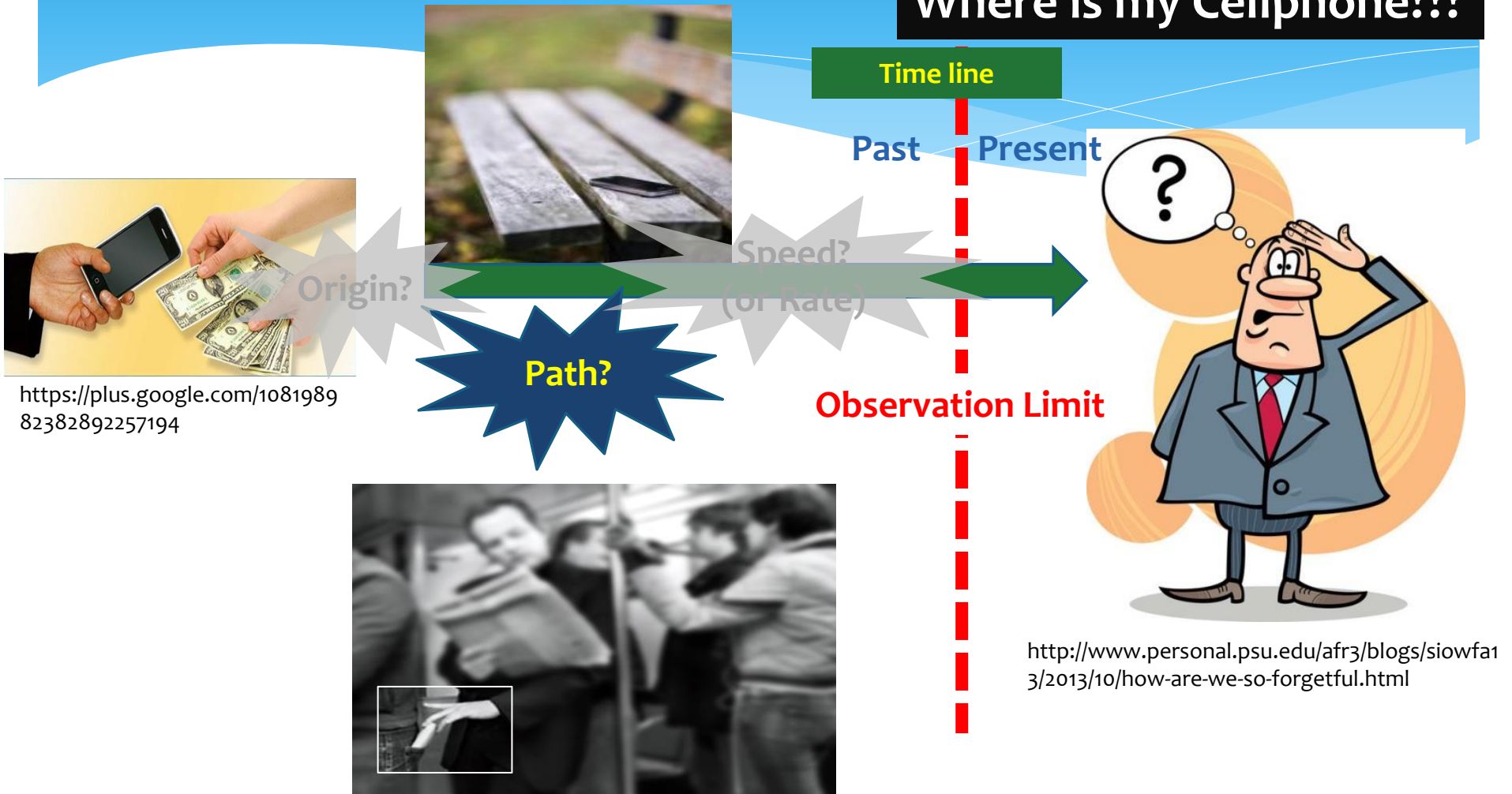
A supersonic Concorde

A 2000 Air France Flight 4590
(from Paris to New York City)

Can Science tell Past?

<https://databreachinsurancequote.com/data-security-2/protecting-yourself-in-the-aftermath-of-a-cell-phone-loss/>

Where is my Cellphone???



<http://www.personal.psu.edu/afr3/blogs/siowfa13/2013/10/how-are-we-so-forgetful.html>

<http://blog.naver.com/PostView.nhn?blogId=brightly29&logNo=220730793773&categoryNo=0&parentCategoryNo=0&viewDate=¤tPage=1&postListTopcurrentPage=1&from=postView>

What is Science?

Origins Science

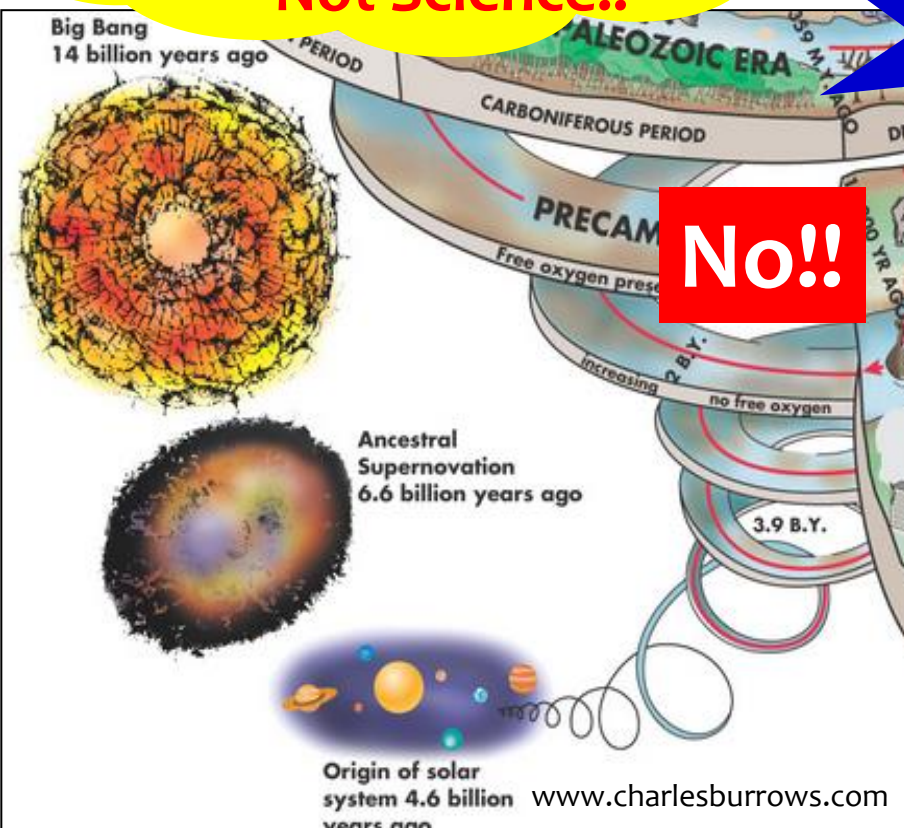
Experimental Science

Would rather call it,
Literary/Visual Art,
Not Science!!

Observable?
Repeatable?
Reproducible?

No!!

Yes!!



But Man's Wisdom Says...

1 Timothy, 6:20 KJV,
O Timothy,,,, avoiding profane and vain
babblings, and oppositions of science
falsely so called:

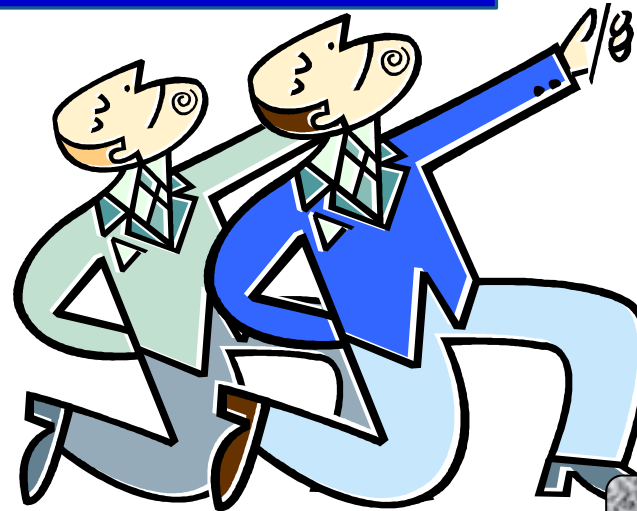
(개역한글, 디모데야,,,, 거짓되이 일컫는
지식의 망령되고 허한 말과 변론을 피하라)

<http://www.holybible.or.kr/>

A New god...

Science

Man's
Wisdom



Mike Riddle slide

Experimental v.s Origins Science

Case: Running on a track..

Origins Science

When did they..?
How long time..?
How many laps..?
.....

They were running when we found them..

Experimental Science

How fast..?
How tall..?
Pace..?
Calorie burning?
.....



www.campuskids.com

???

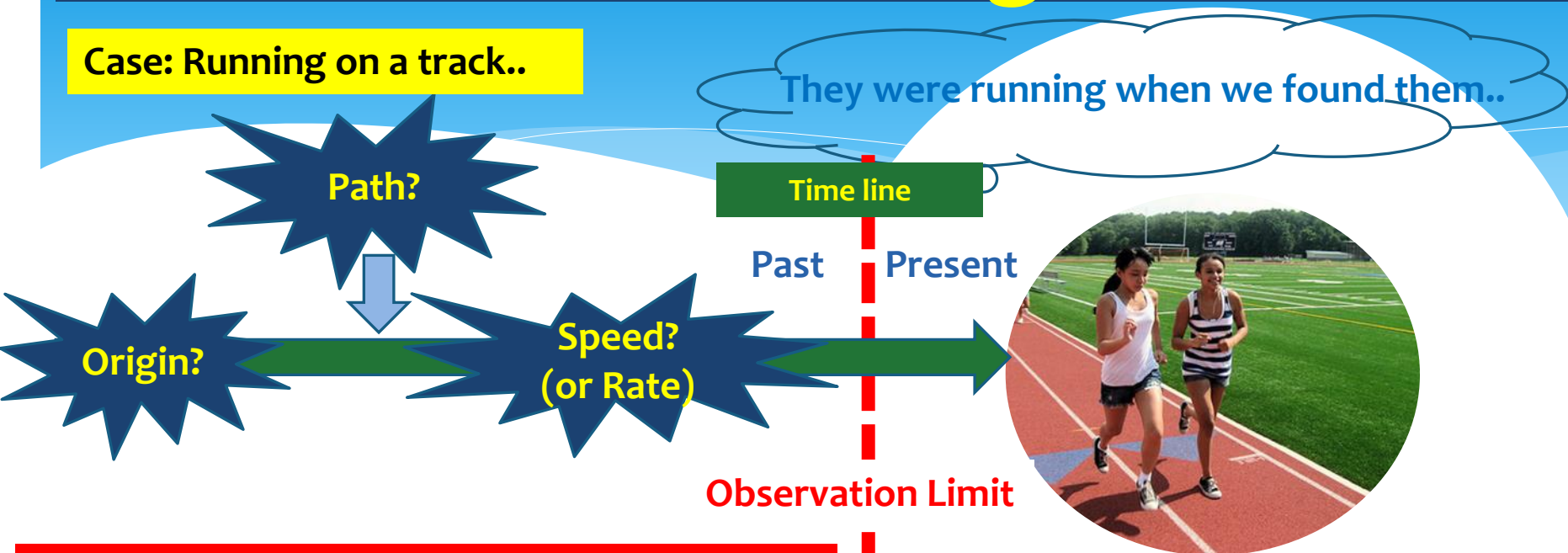
**Not observable !!
So we don't know
the answer!**

Observable !!

**So, we know the answer!!
Because we can measure..**

Uncertainties of Origins Science

Case: Running on a track..



www.campuskids.com

Scope of Origins Science is Past,
 → Beyond Observation
 → No Answer
 → Depends on Men's Assumption!!

Scope of Experimental Science
 is Present → Observable!
 Needs no assumption! No Controversy!!

Not the Issue of Science, but of Men's
 Interpretation or Worldview!!

Who in the World is “the Expert”?

They were ... when we found them...



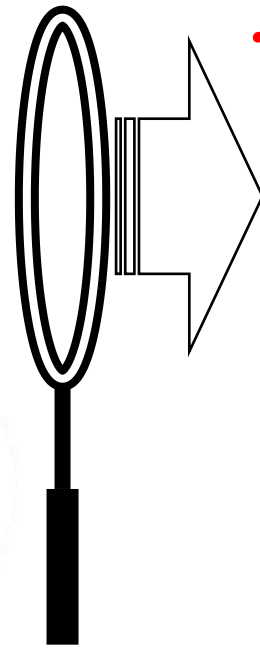
www.campuskids.com



forum.krstarica.com



tubekr.com



For questions such as:
When did they...?
How long time...?
How many...?

... Ask Experts?

Marathoner?
Sport analyst?

Sailor?
Ship maker?

Chef?
Nutritionist?
.....

For Questions
Without Answer



Everyone Can
Give Answers!!



Majority Rule
Decides Expert!



Still NOT the Right Answer!!



Need Witness, Not Expert!!

Science? or Art? (Scientific)

<http://static4.businessinsider.com/image/4f75fec0eab8ea6522000037-1200/a-young-girl-rides-a-broomstick-in-front-of-a-green-screen-testing-out-the-magic-that-made-it-possible-for-harry-to-fly-over-london.jpg>

Experimental Science

Visual (Scientific) Art



She was flying! ?

No !!

Yes!!

Which One is More Advanced Science?

<http://www.hankyung.com/news/app/newsview.php?aid=2014081021781#AA.8973891.1>



http://enternews.sbs.co.kr/article/article_view.jsp?be_id=B1000026011



KBS 1TV History Drama "King Gunchogo"



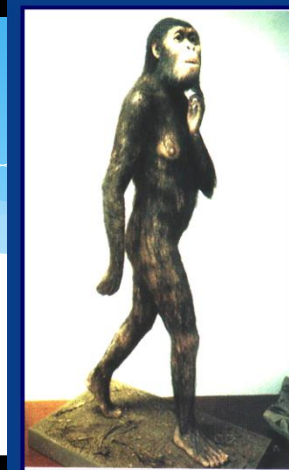
<http://edm-art.com/?db=edmmania&trg=articleContent/3119>

**Not Science!
but Art !!**

Science v.s Visual Art

Art is
Imaginary...

San Diego Museum of man



Living
World
exhibit,
St. Louis
Zoo

Science is
Not...

"LUCY" RECONSTRUCTION
Artist: William Munn
Lucy was a full-grown adult about 3.5 feet (1 m) tall and weighed about 60 pounds (27 kg). Her small size indicated that she was female (males were larger). She spent some time sitting but on the ground she walked on two legs.



Chris Ashcraft slide

<http://static4.businessinsider.com/image/4f75fecdeeb08ea650200037-1200/a-young-girl-rides-a-broomstick-in-front-of-a-green-screen-testing-out-the-magic-that-made-it-possible-for-harry-to-fly-over-london.jpg>

Science v.s Visual Art

San Diego
Museum of man



**Art is
Imaginary...**

Time line

Past

Present

**Science is
Not...**

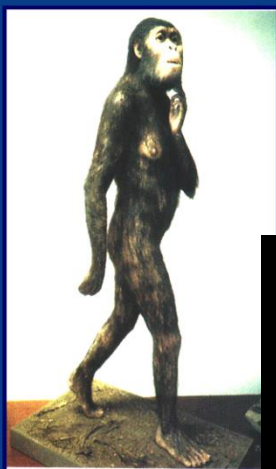
Path ?

Origin ?

Evolutionary Imagination

Rate ?

Observation Limit



Living
World
exhibit,
St. Louis
Zoo

"LUCY" RECONSTRUCTION

William Munns

was a full-grown adult about 3.5 feet (1 m) tall and weighed about 60 pounds (27 kg). Her small size indicated that she was female (males were larger). She spent some time in trees, but on the ground she walked on two legs.

**Should Be in Art Book,
Not Science Book !!**

What Does the Science Say?

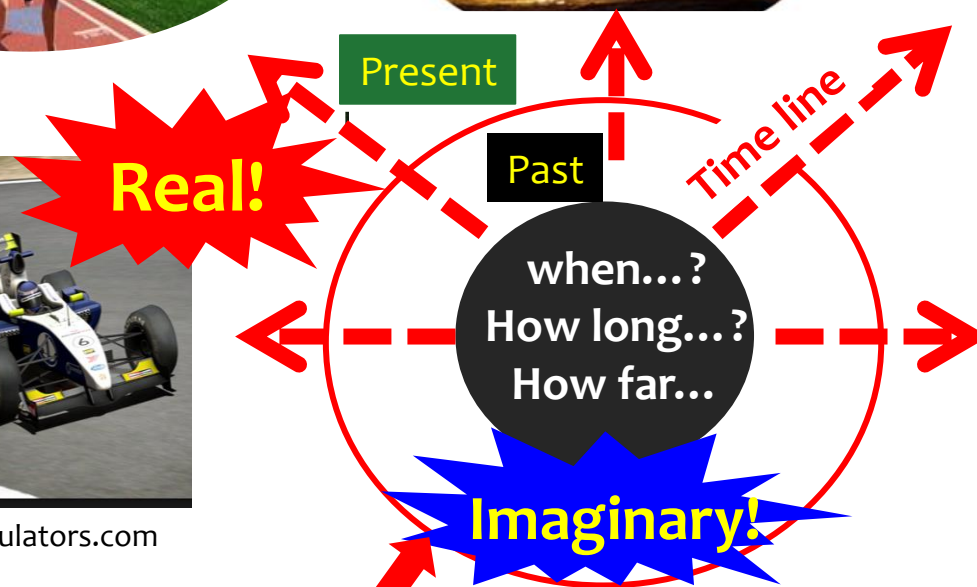
Every Case is Independent from Experimental Science's View Point , however....



racingseatsimulators.com



mycargear.com



... All Case become The Same One Topic from Origins Science's View Point.

Every Case is Independent from Experimental Science's View Point , however....



Limit of Science

**Present:
Observable**

**Past:
Non-observable**

**Future:
Non-observable**

Origins?

Destiny?

Evolution Theory

Many Artists

**Many
Scientists**

Scope of Science

Many Artists

Scope of Art



What the Bible says...

Beware lest any man spoil you through philosophy and vain deceit, after the tradition of men, after the rudiments of the world, and not after Christ.

(누가 철학과 헛된 속임수로 너희를 노략할까 주의하라. 이것이 사람의 유전과 세상의 초등 학문을 좇음이요 그리스도를 좇음이 아니니라)

-Colossians 2:8-



Creation Science for Students

-Think Outside The Box -

- Biblical Creationism/
What is Issue?
- **Limit of Science: Case Study**
- Social Impact

Case Study: Geology

Origins Science

Experimental Science

There were **Strata** when we found the canyon.

How large force?
How long time..
When did it..?

.....



Chris Ashcraft slide

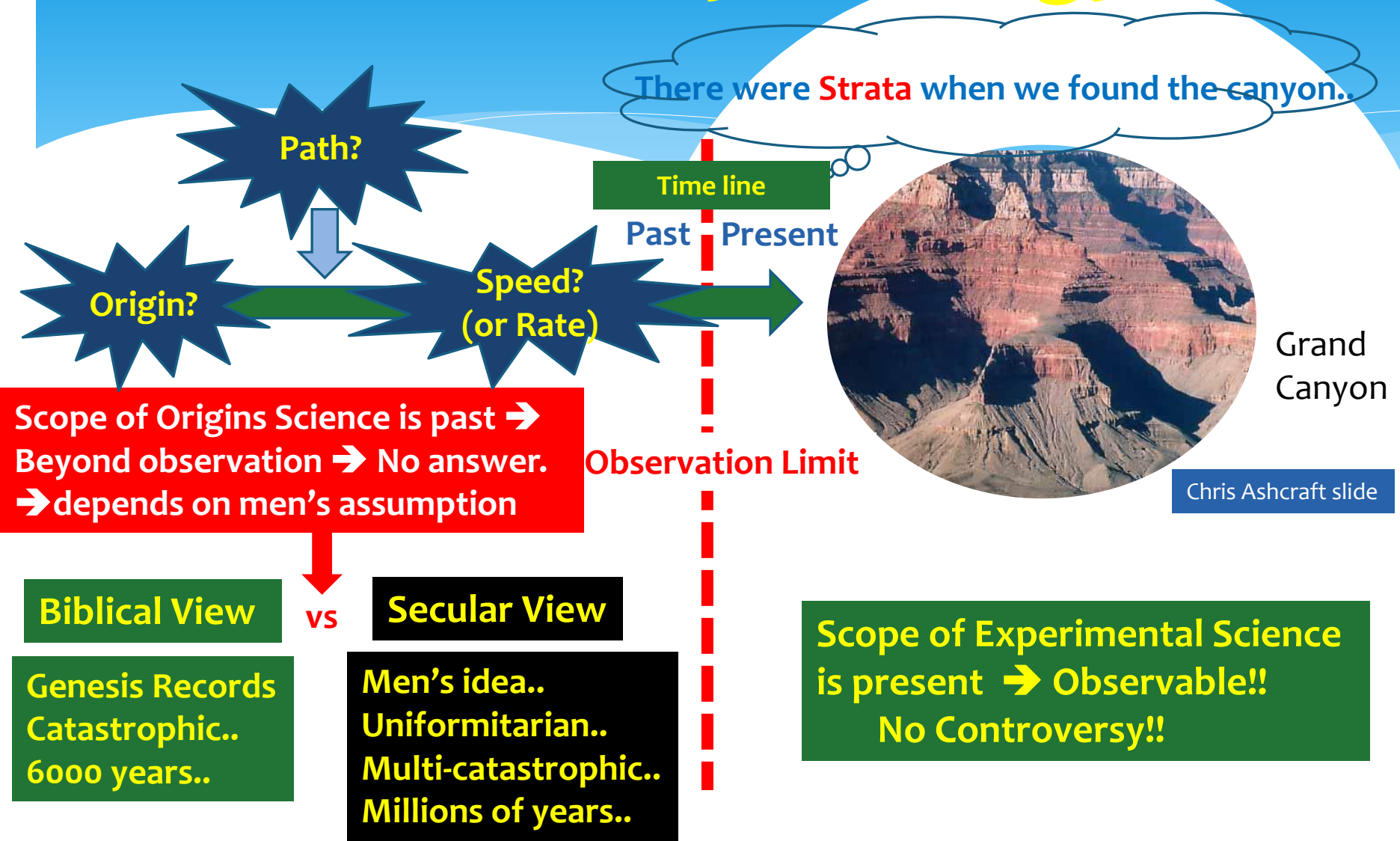
How deep..?
How large..?
How many..?

.....

Not observable !!
So we don't know the answer!
Because we need...:
-Initial condition
-Path
-Any interruption

Observable !!
So we know the answer!!
Because we can
measure..

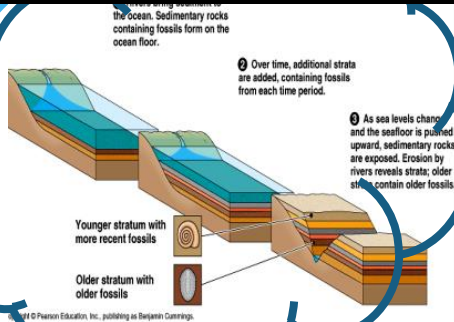
Case Study: Geology



Not the Issue of Science, but of Men's Interpretation or Worldview!

Two views on Strata

Uniformitarian model



Catastrophic Model



There were **Strata** when we found the canyon..

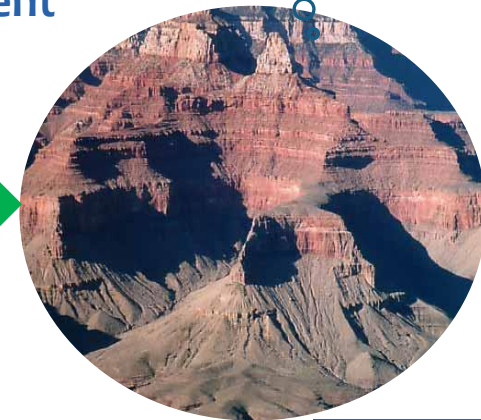
Time line

Past | Present

Path ?

Origin ?

Rate ?



Grand Canyon

Chris Ashcraft slide

Observation Limit

Origins Science

→ Beyond Observation

→ No answer.

→ Issue of Subjective Imagination!!

Experimental Science

→ Measurable!!

No Assumption!!

Geology: Mount St. Helens

Mount St. Helens May 17, 1980 –
on (May 18, 1980)



Chris Ashcraft slide



On March 19, 1982, a small eruption melted the snow in the crater over the winter, and a resulting mud flow eroded a canyon system, the little Grand Canyon.



Evidence from Mount St Helens and other areas has challenged the old belief that massive rock layers and river valleys take millions of years to form.

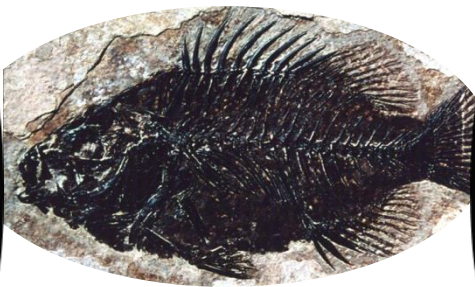
Fossil Formation

Catastrophic

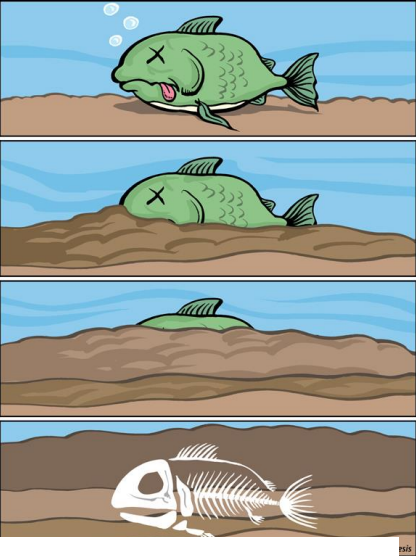


Causes sudden burial

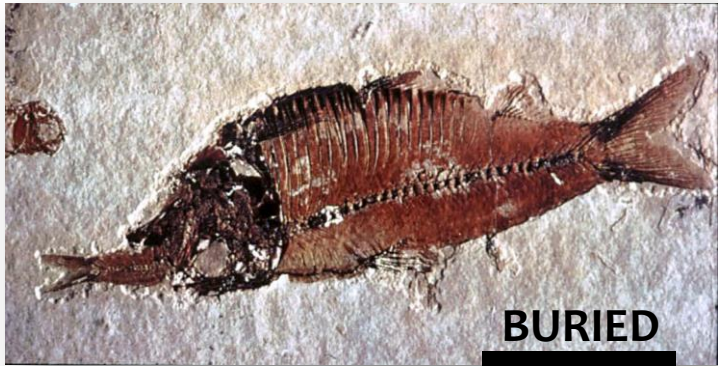
Answers in Genesis



Slow and gradual



Fossil can only be formed by fast burial → support Genesis Flood

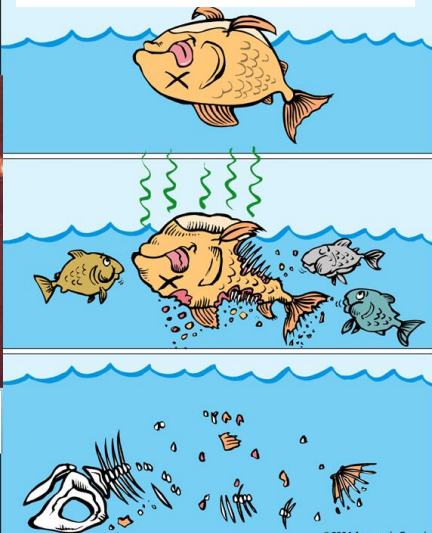


BURIED
EATING

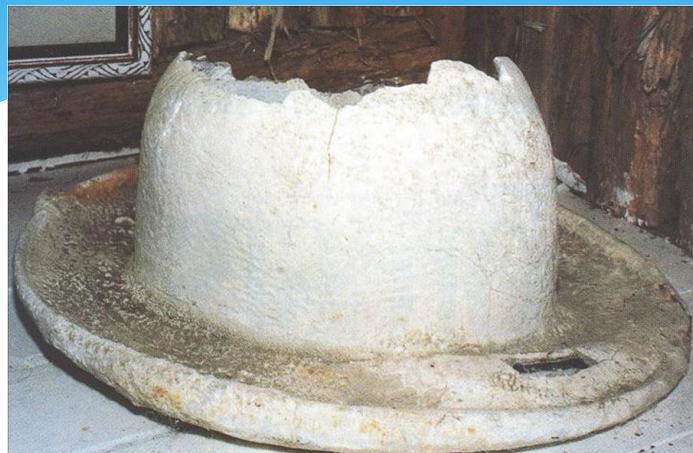


BURIED
BIRTH

Burial.. or, decay?



Does it take millions of years?



<http://www.createddinos.com/Creationevolution/fossils.html>

Two fossilized hats. One was dropped in a coal mining pit. The other was found under volcanic ash.



The rubber-soled boot with petrified cowboy (human) leg, bones ... was found in a dry creek bed near the West Texas ..., about 1980 by Mr. Jerry Stone, an employee of Corvette oil company.



http://pocketanswers.net/fossilized_manmade_objects_files/image004.jpg

What does Geological Column say?

The Evolutionary Tree



http://m.blog.daum.net/_blog/_m/articleview.do?blogid=0Jlz7&articleno=7752265

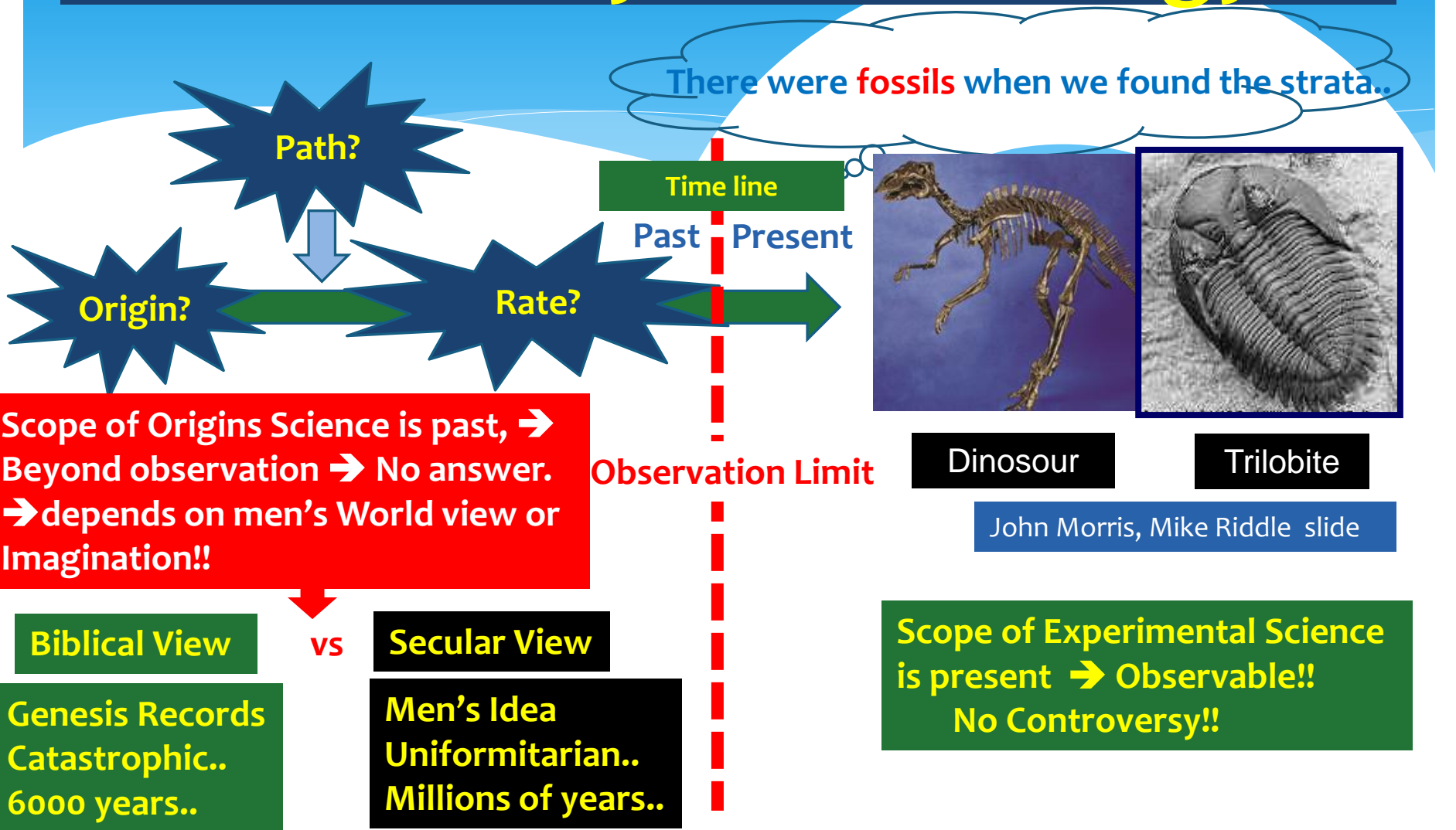
Division of Geological Time	Era	Period	Rocks	Dominant Life
	Cenozoic	Quaternary	2	
		Tertiary	65	
	Mesozoic	Cretaceous	136	
		Jurassic	190	
		Triassic	225	
	Palaeozoic	Permian	270	
		Carboniferous		
		Pennsylvanian	310	
		Mississippian	345	
		Devonian	395	
		Silurian	430	
		Ordovician	500	
	Proterozoic	Cambrian	570	
		Precambrian		
	Archaeozoic			

- Fossils can only be formed by fast burial.
- Every strata contains fossils.
- ➔ Every strata should be formed fast.
- ➔ support catastrophic Genesis Flood.

<http://discovercreation.org/blog/tag/the-biggest-challenges-to-evolution/page/3/>

Chris Ashcraft slide

Case Study: Paleontology



Dinosaur from Millions Years Ago ?

CALIFORNIA'S NESSIE
Pondering the possibility that pre-historic creatures survive in the Pacific
 BY WILLIAM C. ROBERTS

For hundreds of years, sailors have reported seeing huge dragon-like creatures that have surfaced near—and sometimes attacked—unwary ships and crews plying the world's seas. From the far Arctic Ocean to the deep, land locked Loch Ness, the large snake-like beasts that swim with their heads held high above the water blowing clouds of spray from their mouths terrified sailors who called them "sea serpents." Do they really exist or are they figments of the imagination of uneducated seafarers who spend too much time near the rum cask?

The ocean is the world's last great frontier and many areas of this vast body of water remain unexplored to this day. It is the age of the dinosaurs and occasionally are seen by humans.

Off the coast of Central California lies a mysterious underwater trench that extends many miles into the Pacific. Known as the Monterey Submarine Canyon, it is one of the deepest and least studied chasms in the sea.

For more than 100 years, sailors and fishermen in the vicinity have reported sightings of unusual marine animals, huge fish of strange descriptions, mysterious forms swimming beneath the waves and freak water conditions and currents that spring up for no apparent reason. Parts of the submarine canyon have even been described as having bottomless pits.

Spectators came from miles around to view the "sea monster" that washed up on Moore's Beach near Santa Cruz in 1935.

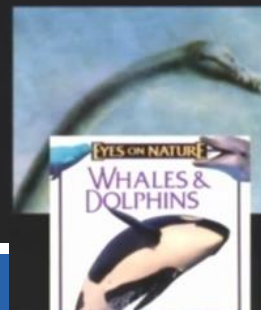
shore, without striking bottom.
 To add to the mysterious appearance



Skin Diver Nov. 1989

Kent Hovind slide

Shipwrecks and Sea Monsters of California's Central Coast by Randall Reinstedt, p. 167 Available from CSE



E.L. Wallace, president of the Natural History Society of British Columbia

Skin Diver Nov. 89

"My examination of the monster was quite thorough It had no teeth. Its head is large and its neck fully 20 feet long. The body is weak and the tail is only three feet in length from the end of the backbone . . . with a bill like it possesses, it must have lived on herbage and undoubtedly inhabited a swamp. I would call it a type of plesiosaurus."

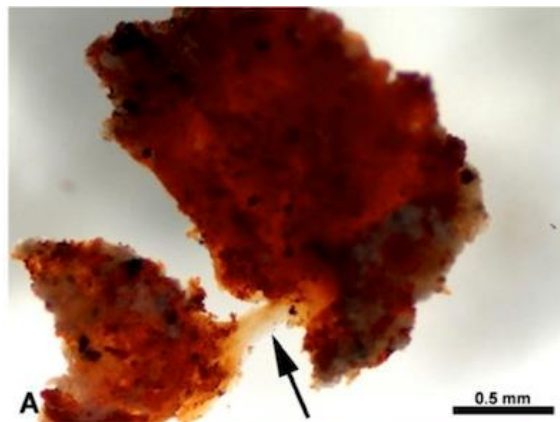
Another witness, Judge W.R. Springer of Santa Cruz, felt the creature was from a prehistoric age. He added his observation: "evidence of two short feet or flippers, and probably swam with its head high above the water."



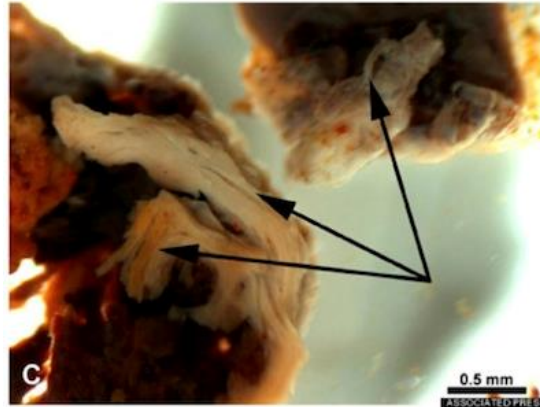
Shipwrecks and Sea Monsters of California's Central Coast by Randall Reinstedt p. 166. Available from CSE

Dinosaur from Millions Years Ago?

The research, by Mary Schweitzer, a molecular paleontologist at North Carolina State University, explains how proteins — and possibly even DNA — can survive millennia. She and her colleagues raised this question in 2005, when they found the soft tissue preserved inside the leg of an adolescent *T. rex* unearthed in Montana.

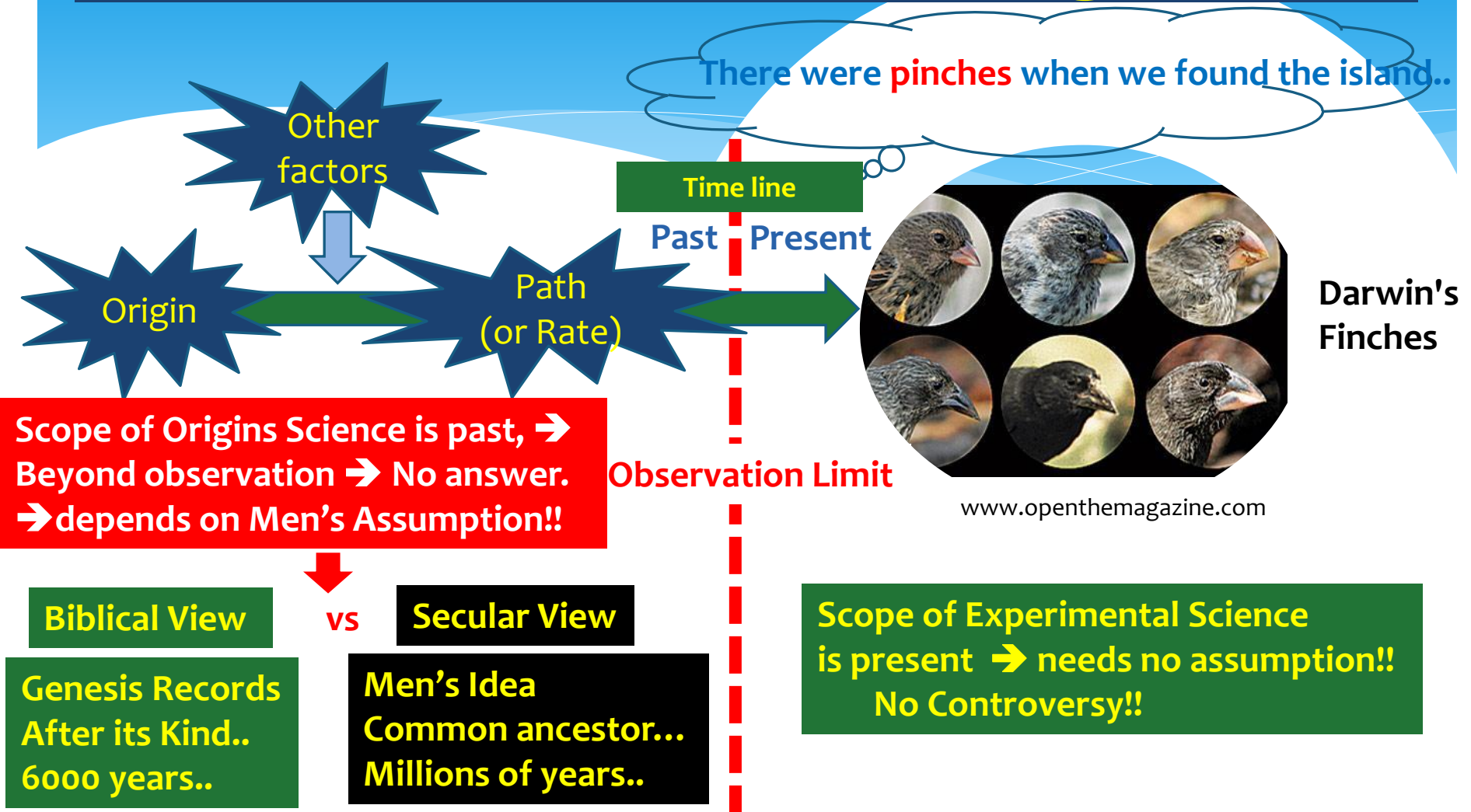


This fragment of demineralized tissue lined the marrow cavity of a *T. rex* femur. The demineralized fragment in “A” was flexible and resilient. When stretched, as shown by the arrow, it returned to its original shape. “B” shows the same fragment after air-drying. The fibrous character of the fragment is shown in “C.”



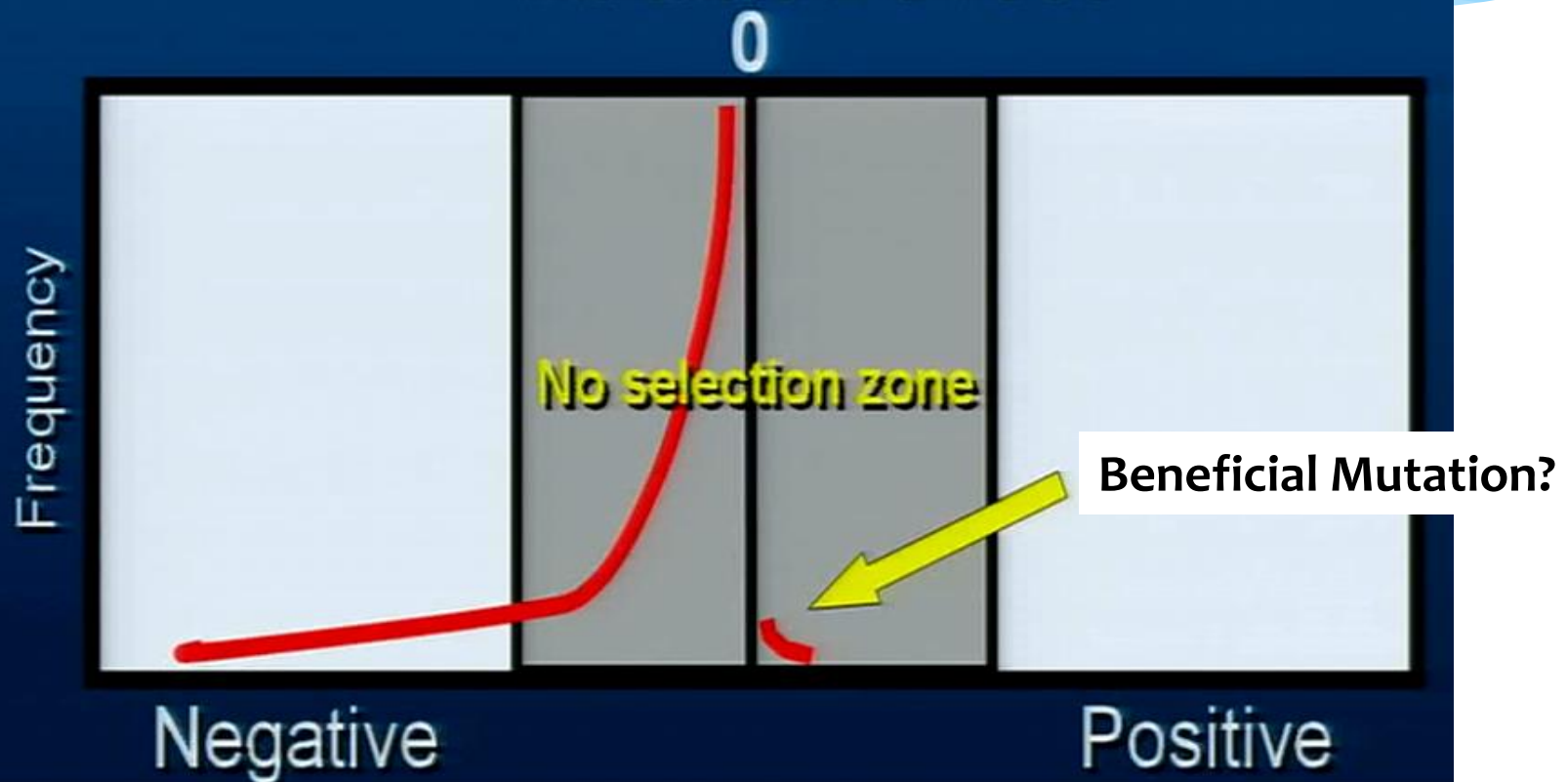
http://www.huffingtonpost.com/2013/11/27/t-rex-soft-tissue-discovery_n_4349214.html

Case Study: Biology

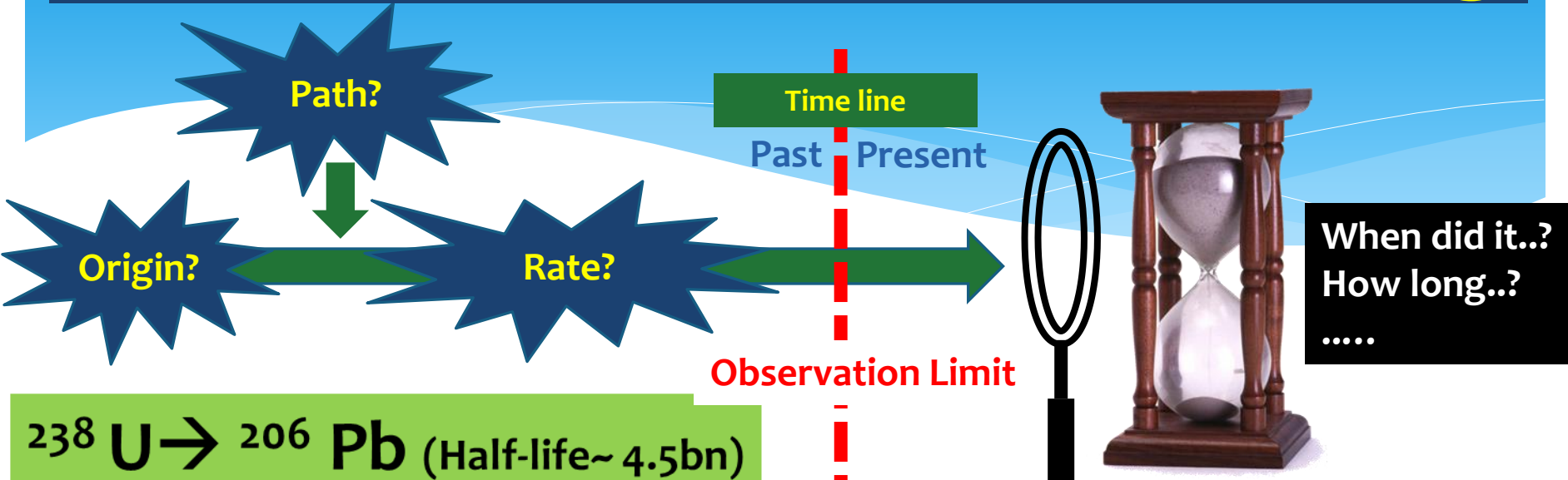


Beneficial Mutation?

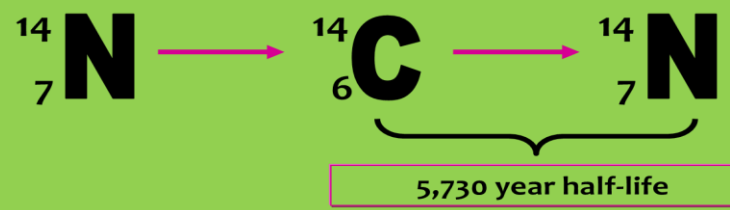
Kimura's Distribution Mutation effect



Case Study: Radiometric Dating



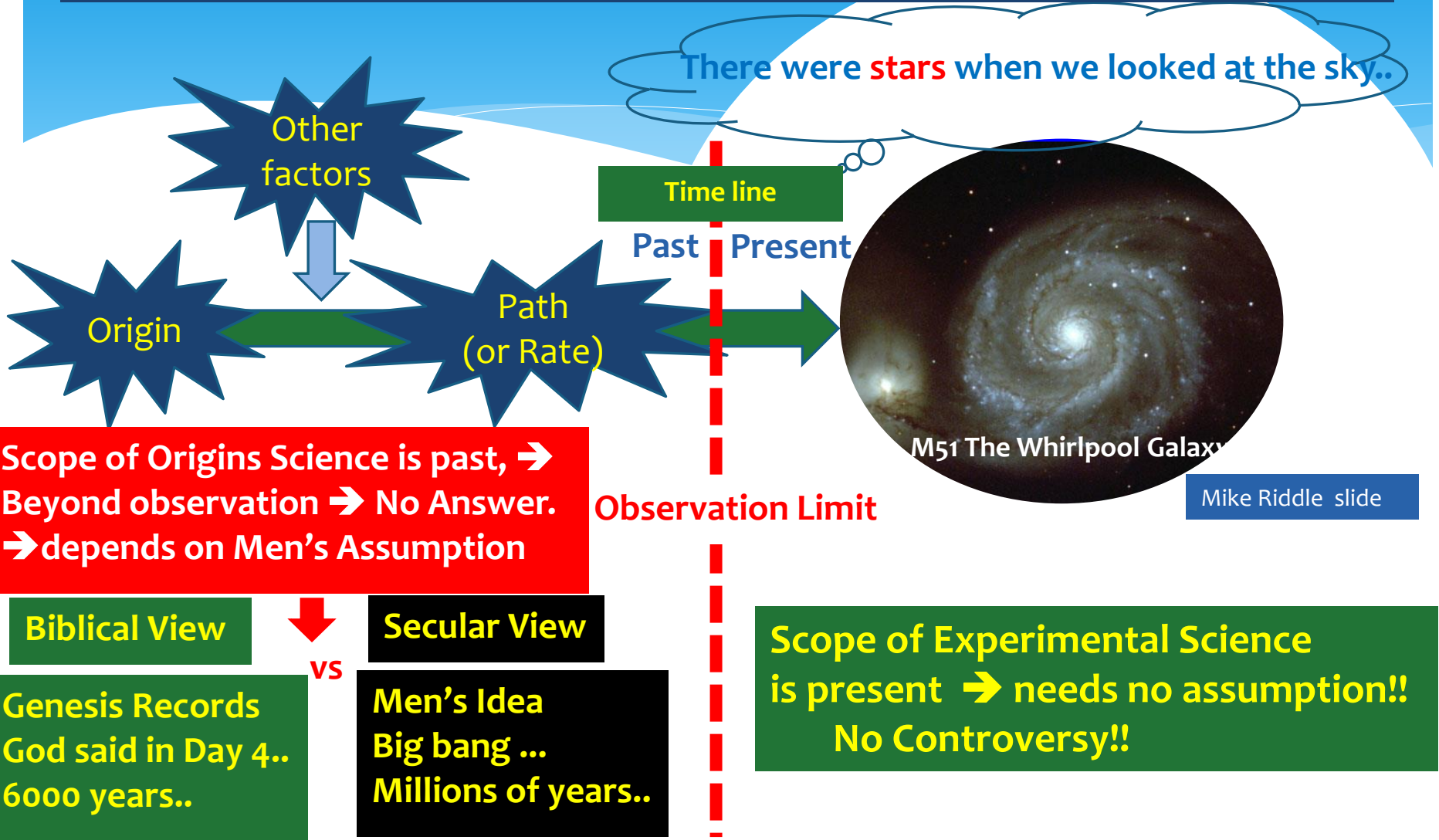
Cosmic radiation



Not Observable Past Event!
So We Don't Know the Answer!
Because We Need... :

- Initial Condition.
- Path.
- Rate.

Case Study: Astronomy



Case Study: Speed of Star Light

There came **lights** when we looked at the star..



M51 The Whirlpool Galaxy

Original Speed?

Constant Path?

constant Speed?

Time line?

Past Present

Far Near

Or Distance line?

Observation Speed



www.8planets.co.uk

Observation Limit

Scope of Origins Science is past,
→ Beyond observation →
Not Science, but Worldview Issue!!

vs

Biblical View

Genesis Records
God said in Day 4..
6000 years..

Secular View

Men's Idea
Millions of light year
Millions of years old..

Scope of Experimental Science is present →
Observable!!
No Controversy!!

Review of Origins Cases

Origins Science

There were when we found them..

Experimental Science

What causes..?
How long time..?
When did it happen..?

.....

Not observable !
→ No Proof !!

**Scope of Origins Science
is Past: Not Science, but
Interpretation!**



and others

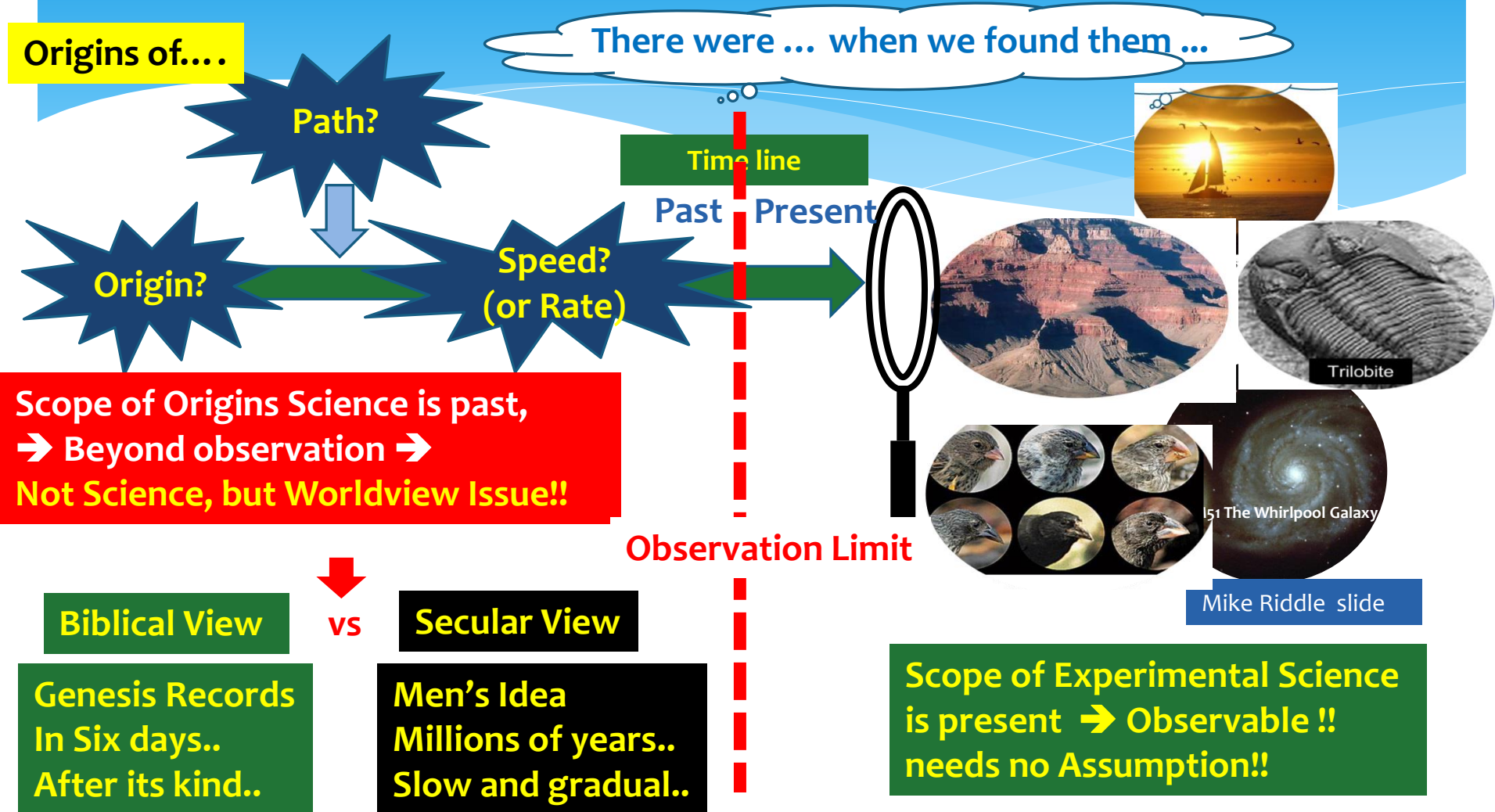
How deep..?
How large..?
How many..?

.....

Observable !!
So we know the answer!!
Because we can measure..

**Scope of experimental
Science is Present**
→ need no assumption!

Summary of Origins Cases



The Great Faith of Evolution Theory

Creationism
Bible says... and we believe..

“In the Beginning, God...
VS
In the Beginning, Dirt..”
- Kent Hovind -

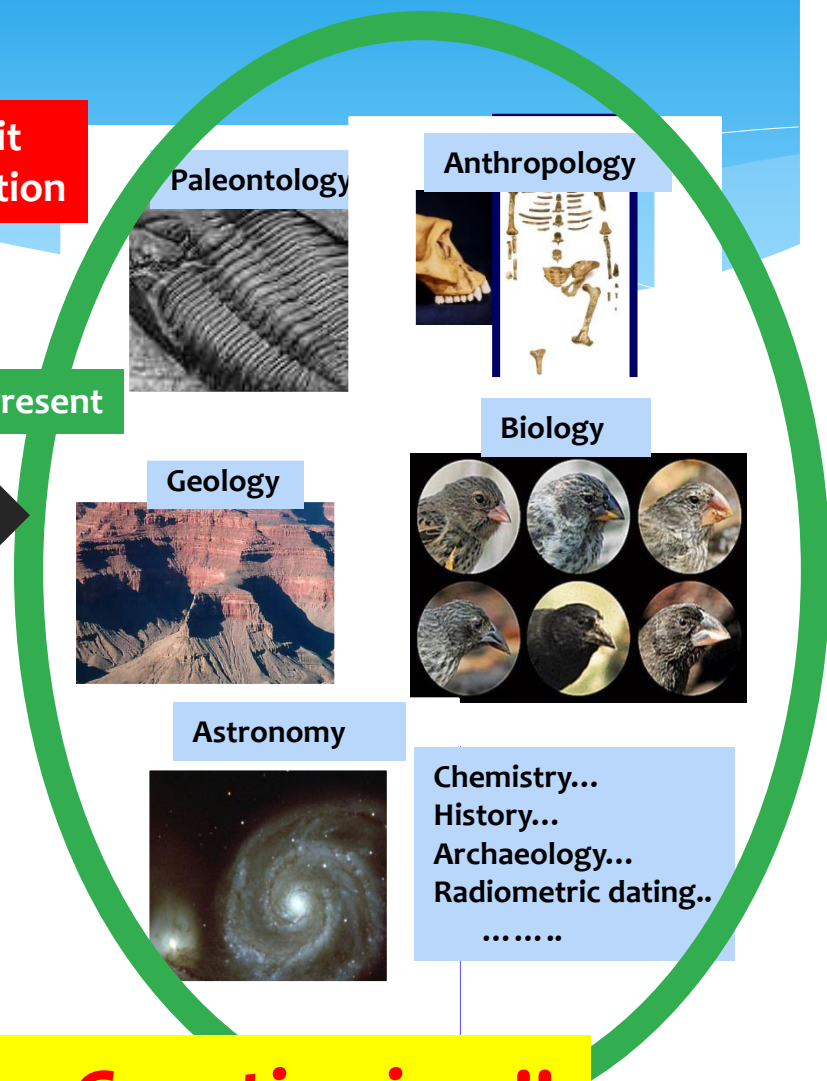
Evolutionism
Men assume... and they believe..

Origins??

Time Limit
of Observation

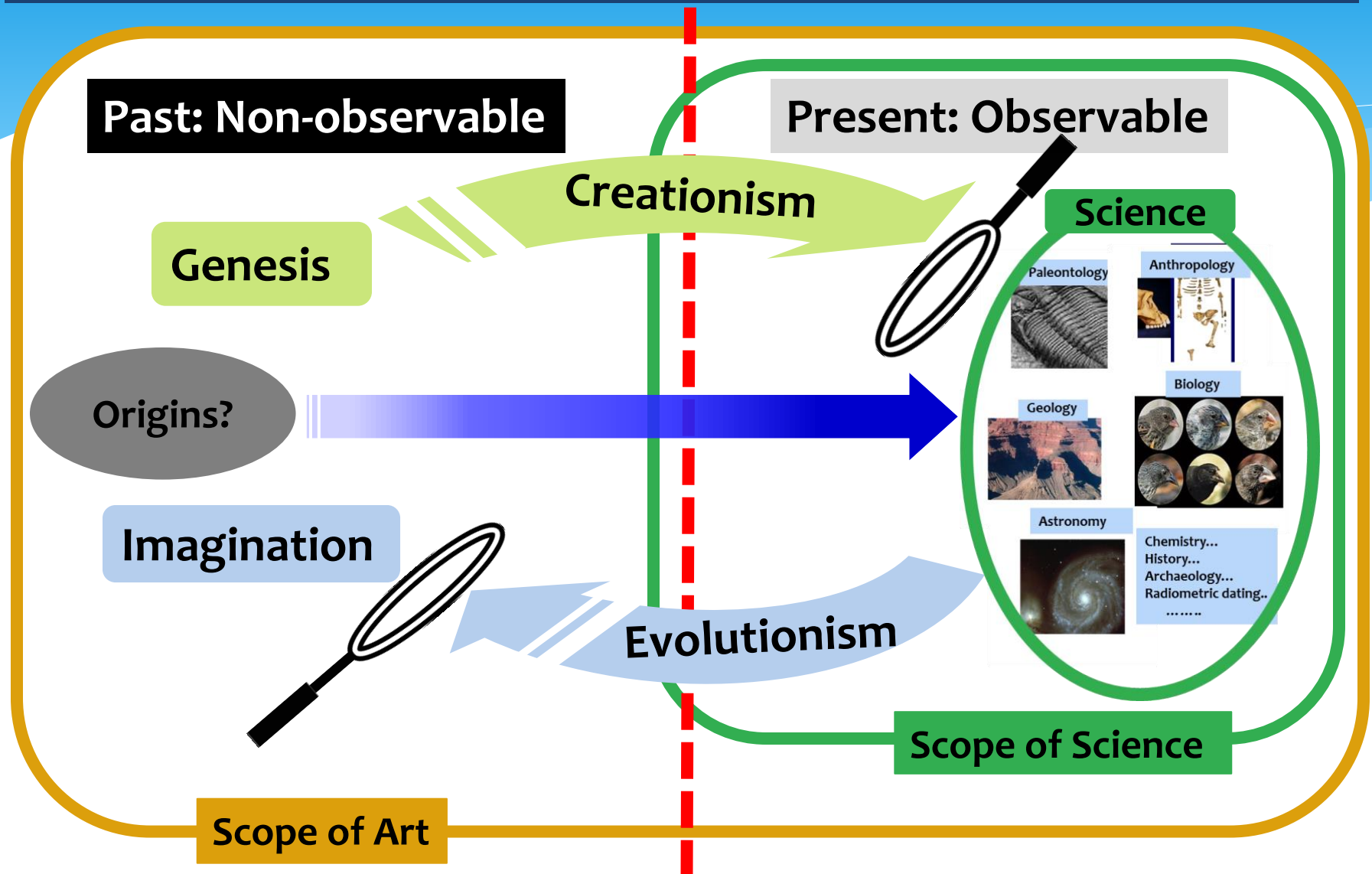
Past

Present



Evolutionism is as Religious as Creationism!!

Creationism vs Evolutionism



What the Bible says...

**Love does not delight in evil
but rejoices with the truth.**

**[사랑은] 불의를 기뻐하지
아니하며 진리와 함께 기뻐하고**

-1 Corinthians 13:6-

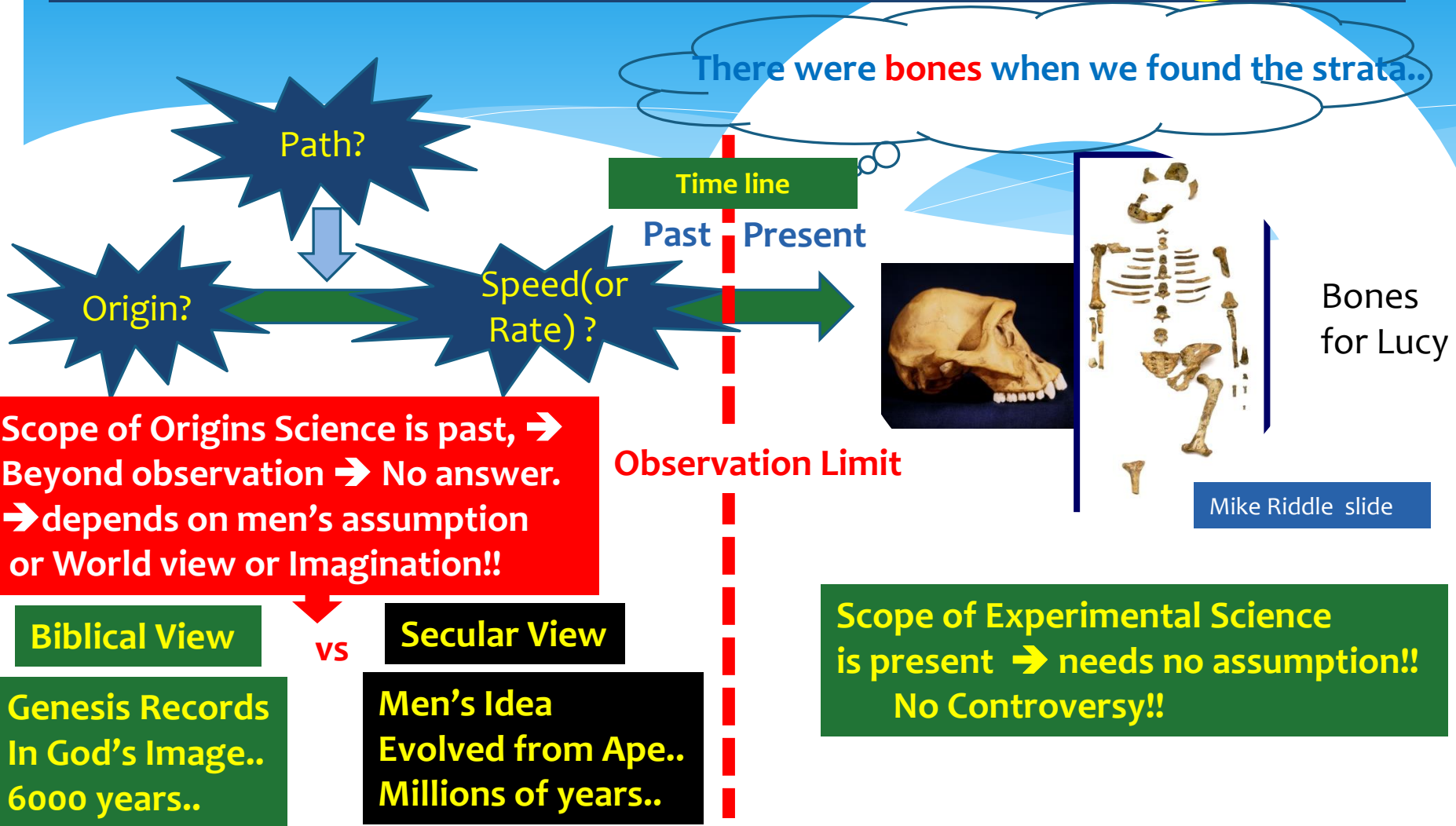


Creation Science for Students

-Think Outside The Box -

- 
- Biblical Creationism/
What is Issue?
 - Limit of Science: Case Study
 - **Social Impact**

Case Study: Anthropology

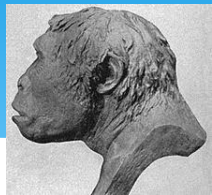


Not the Issue of Science, but of Men's Interpretation or Philosophy

Case of Human Evolution



Found in Dusseldorf, Germany. Believed to live 30,000 to 300,000 years ago,
Proved to be Modern Human
Neanderthals



Java Indonesia. Claimed to be 500,000,
Proved to be thighbone, animal skull
Java Man



Found in England, Believed to be 500,000 years old..
Found to be Fraud
Piltdown Man



Found in Nebraska, supposed to be Hominid,
Turned out to be a pig's tooth
Nebraska Man

창세기 믿어 말어?
-김무현, Texas A&M 대학 교수
해양/토목 공학 박사

Discovered near Beijing, estimated to be ~ 500,000,
Assumed to be monkey



Peking Man



Cromagnon
Found skull and Small jaw bone in a cave, France. Believe to live 10,000 to 40,000 years ago.
Agreed to be Modern man



Heidelberg Man
Discovered near Heidelberg, Estimated to be ~ 400,000 years,
Proved to be modern human



Ramapithecus
Discovered jaw fragments and teeth in India.
Proved to be Orangutan



Australopithecus (Lucy)
Found in Ethiopia, Dated to be 3 million years,
Proved to be chimpanzee

World First Human Zoo Opened -2005, in London, England-

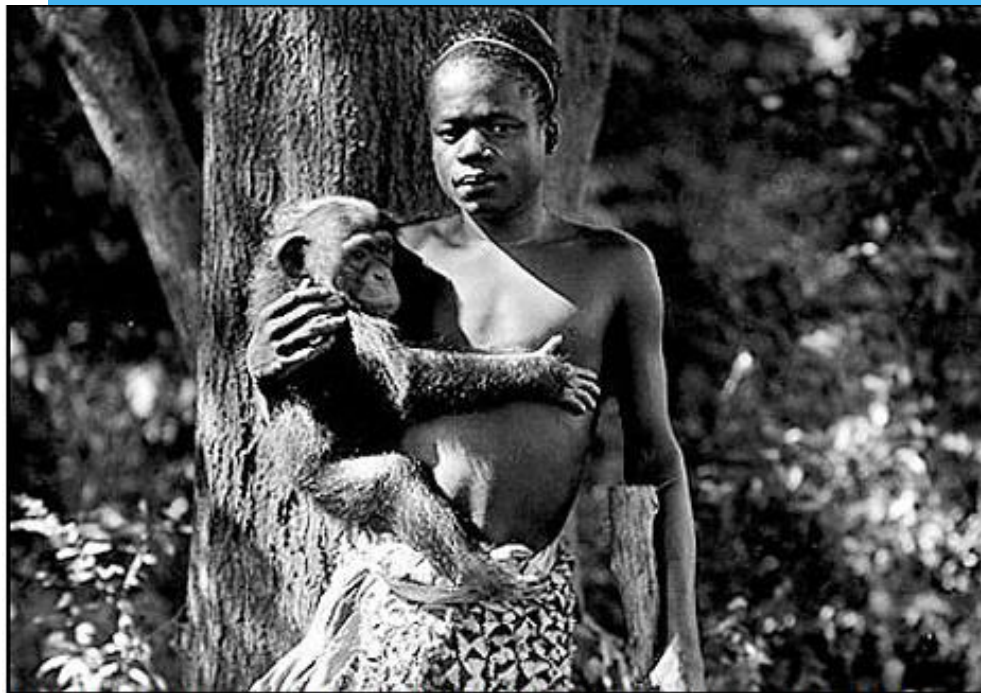


A spokeswoman, said "Seeing people ... among other animals," teaches members of the public that the human is just another primate."

Evolutionism is a Hot Business Model?

Museum, Education, Abortion, Homosexuality, Communism, Humanism...

Another Human Zoo, Decades Ago..



Exploited: Pygmy Ota Benga on display with monkeys at Bronx Zoo in 1906



Brussels, Belgium in 1958.

<http://www.dailymail.co.uk/news/article-1224189/Caged-human-zoo-The-shocking-story-young-pygmy-warrior-monkey-house-fuelled-Hitlers-twisted-beliefs.html>

<https://www.popularresistance.org/deep-racism-the-forgotten-history-of-human-zoos/>

Mike Riddle slide

What is issue?

“I myself have little doubt that in England it was long-age uniformitarian Geology and the Theory of Evolution that changed us from a Christian to a pagan nation.”

F. Sherwood Taylor, “Geology Changes The Outlook” Curator of the Museum of the History of Science, Oxford, England.

Ideas and beliefs of the Victorians, SYLVAN Press Ltd, London, p195, 1949

Social Impact: Textbook

*Adolf
Hitler*

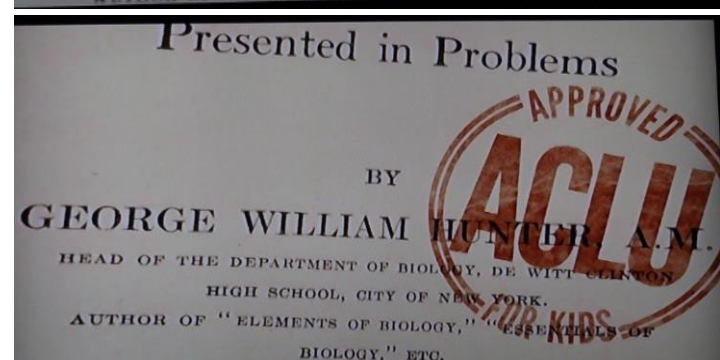
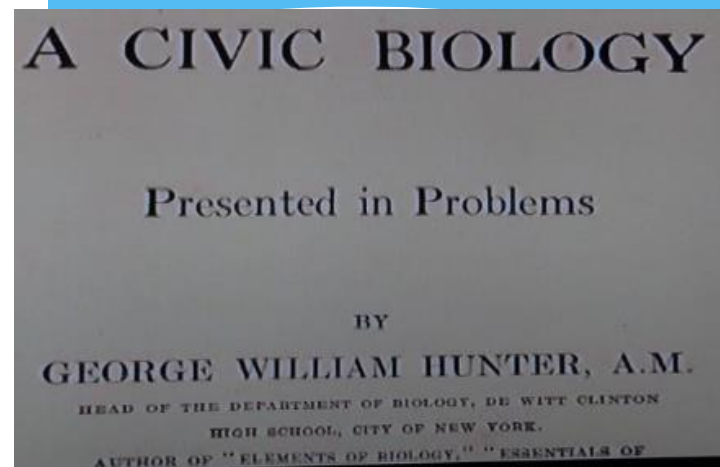


*Let me control the textbooks
and I will control the state.*

Russ Miller
slide

Social Impact: Textbook

Published in 1914



EVOLUTION

Man's Place in Nature. — Although we know that man is separated mentally by a wide gap from all other animals, in the study of physiology we must ask where we are to place man. In our attempt to classify man, we see at once he must be placed with the vertebrate animals because of his possession of a vertebral column. Evidently, too, he is a mammal, because the young is nourished by milk secreted by the mother and because he has at least a partial covering of hair. Anatomically we must place man with the apelike mammals, because of numerous points of structural likeness. The group that includes the monkeys, apes, and man we call primates. There is a greater difference

subjugation and domestication of animals began to take place. Man then began to cultivate the fields, and to have a fixed place of abode other than a cave. The beginnings of civilization were long ago, but even to-day the earth is not entirely civilized.

The Races of Man. — At the present time there exist upon the earth five races or varieties of man, each very different from the other in instincts, social customs, and, to an extent, in structure. These are the Ethiopian or negro type, originating in Africa; the Malay or brown race, from the islands of the Pacific; the American Indian; the Mongolian or yellow race, including the native of China, Japan, and the Eskimos; and finally, the highest type of all, the Caucasians, represented by the civilized white inhabitants of Europe and America.

REFERENCE BOOKS

IndocTriNation: Public Schools and the Decline of Christianity in America

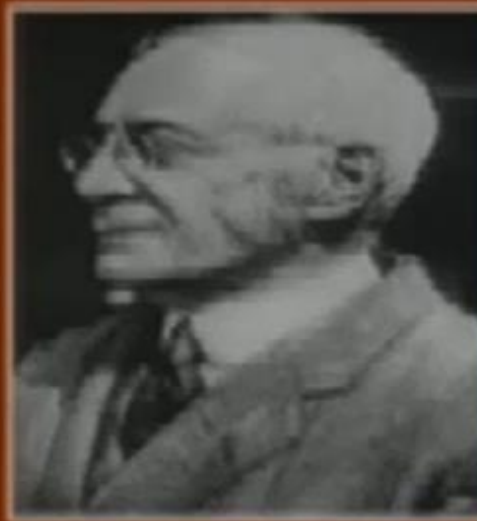
Christian Education Heritage

- [Harvard University](#) - 10 of the first 12 presidents of Harvard were ministers, and over 50% of the 17th Century Harvard graduates became ministers.
- [Princeton University](#) - was founded by the Presbyterian Church. Until 1902, every president of Princeton was a minister.
- [Yale University](#) - was founded by 10 ministers. The primary goal was that: *"Every student shall consider the main end of his study to wit to know God in Jesus Christ and answerable to lead a Godly, sober life."*



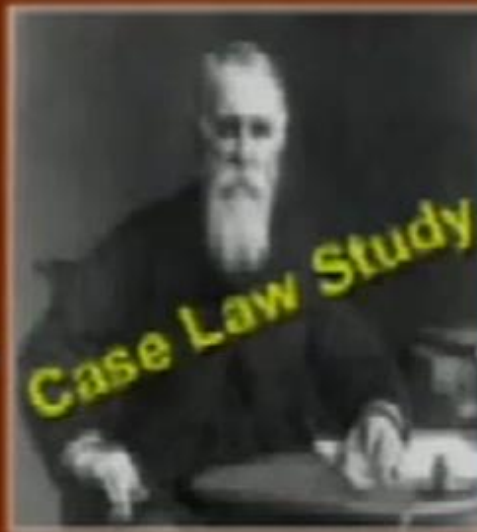
Social Impact: Academy

Charles Eliot
Harvard
President
1869 - 1909



Both dedicated
themselves to
making
Darwinism
the new
foundation
of education
and law.

Christopher
Langdell
Dean of
Harvard Law
1870 – 1895



Case Law Study

H.W. Titus: God, Man and Law

Photos: Wikipedia.com

Russ Miller
slide

Social Impact: Academy

Christiannews.net/2014

“SPRINGFIELD, MO –

A Unitarian organization in Missouri hosted an evolution camp for kids ..., during which the kids were taught how to defend evolutionary theory from critics, including Christians.”

“I am the universe,” one of the camp’s organizers, Jennifer Lara, recited to the kids:

“Like you, I started as a speck about 13 billion years ago. I was smaller than a piece of dust under your bed. I was bursting with wild and dazzling dreams of galaxies, stars and planets in radiant colors —bright yellow, molten red and piercing blue.”...



Located in Harvard Square, in Cambridge, Massachusetts

<http://christiannews.net/2014/07/28/camp-teaches-kids-how-to-defend-evolution-against-creation-bullying/>

“Princeton University allows students to select from Six gender identities”

By Dailymail.com Reporter , 2 August 2017



Course Planner Blackboard C

Gender Identity (Optional)

The University offers the option for you to select your gender identity. You may select multiple gender identities. Your gender identity is confidential and is not generally available. Click Save or Apply to update your record.

<input checked="" type="checkbox"/>	Cisgender
<input type="checkbox"/>	Genderqueer/gender non-conform
<input type="checkbox"/>	Man
<input type="checkbox"/>	Other
<input type="checkbox"/>	Trans/transgender
<input type="checkbox"/>	Woman

“The private school isn't the alone in the move ... Roughly 50 colleges or university allow students to select their genders without medical intervention...

The University of Michigan even allows students the option of creating their own designated pronouns”

“One in four, maybe six”



<https://yaledailynews.com/blog/2010/02/10/one-in-four-maybe-six/>

N UNIVERSITY CITY SPORTS SCITECH CULTURE YTV WKND MAG PHOTO |

BRAZILIAN STUDIES IN THE U.S.

THE ROAD AHEAD

Monday, May 7, 2018 9 am - 4:30 pm

Maurice B. Greenberg Conference Center, 391 Prospect Street

Sponsored by:

Yale University
The Office of International Affairs
The Council on Latin American
and Iberian Studies
The Whitney and Betty MacMillan Center
for International and Area Studies

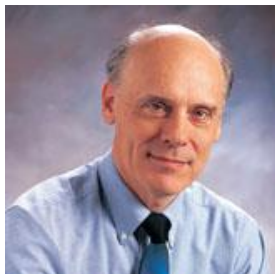
MINISTRY OF
EDUCATION
BRASIL

One in four, maybe six (Feb. 10, 2010)

DANNY SERNA | FEB 10, 2010

It turns out “one-in-four” is a bit high. The common adage — coined by a Yale alum in 1987 to describe the surprisingly high proportion of homosexuals she encountered during a campus reunion — is not too far off, according to a News poll, sent last week to 5,186 undergraduates, of which 1,770 students responded. **...17.7 % of Yale men — about one in six** —...are attracted only to men, compared to **8.1 % of Yale women** ...are attracted only to women. **...12.2 % of Yale women** ...were bisexual, roughly three times the rate of men who said they are attracted to both men and women.

Impact on Bible Interpretation: Old Earth



- * **Hugh Ross** is a leading proponent of “day-age” creationism. His ministry, “Reasons to Believe”, has charters in many U.S. cities including Seattle.

- * <http://www.reasons.org/>



“I kind of read through the text and it seemed obvious to me that **it had to be a local flood, not a global flood**, and I was shocked to discover that there are all these Christians, and even Christian scholars that held to a global flood. And I wanted to figure out, you know, how did this happen? You know, how did people get off track like this? And maybe I’m speaking a little bit pridefully here, but you know, that’s how I was operating in my youth,

Hugh Ross, The Flood, Part II, Audio Tape, 1990

Thomas J Kindell slide



OH, ADAM!
THIS IS SUCH
A PERFECT
WORLD!

YES, EVE! IT'S
"VERY GOOD"
JUST LIKE GOD
SAID!

GARDEN
OF EDEN

*Theistic
Evolution*

**MILLIONS
OF YEARS**



*Old
Earth*

**PAIN
DEATH
KILLING
DISEASE
STRUGGLE
SUFFERING
EXTINCTION**

**FOSSIL
RECORD**

Romans 5:12. Therefore, just as sin entered the world through one man and death through sin, and in this way death came to all men, because all sinned

Death → Sin → One Man → World

V.S Death → Evolution → World

Death came through Adam's Sin!!

NOT by Millions of Years of Evolution!!

What the Bible says...

**I have no greater joy than to hear
that my children walk in truth.**

(내가 내 자녀들이 진리 안에서 행한다
함을 듣는 것보다 더 즐거움이 없도다)

3 John 1:4



JESUS LOVES YOU!
THE BIBLE SAYS SO.

THE BIBLE
ISN'T TRUE!



WHERE DID CAIN GET HIS WIFE?
WHERE DO THE DINOSAURS FIT IN THE BIBLE?
HOW DO YOU KNOW THERE IS A GOD?
WHERE DID ALL THE RACES COME FROM
IF GOD CREATED ADAM AND EVE?



Later at home

I DON'T
KNOW.

I TOLD YOU
THE BIBLE'S
NOT TRUE!



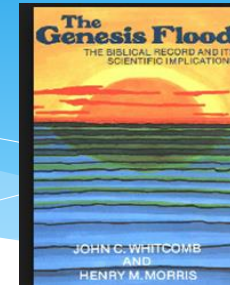
DAD AND MOM, CAN YOU ANSWER
THESE PROBLEMS WITH THE BIBLE?
WHERE DID CAIN GET HIS WIFE?
WHERE DO THE DINOSAURS FIT IN THE
BIBLE? HOW DO YOU KNOW THERE IS
A GOD? WHERE DID ALL THE RACES
COME FROM IF GOD CREATED
ADAM AND EVE?



WE DON'T
KNOW ...



Reference



Henry Morris John Whitcomb

Slides from:

<http://www.nwcreation.net/presentations/>

Chris Ashcraft

Mike Riddle

John Morris

Terry Mortenson

Don Patton: Creationism video

Kent Hovind: Creationism Evangelism Video

Rush Miller: Creation evolution science ministry

임번삼박사: 세계관-진화론-교과서

박창성 목사

김명현 박사

TVNEXT.ORG

- * Institute for Creation Research icr.org
- * Creation Research Society creationresearch.org
- * Creation Ministries International creation.com
- * Answers in Genesis answersingenesis.org
- * Creation and Earth History museum <http://creationsd.org/>
- * Northwest Creation Network nwcreation.net
- * Korea Association for Creation Research <http://www.creation.or.kr/>
- * Association for Creation Truth www.hisark.com
- * World Creation Ministries <http://www.wcmweb.org/chnet2/home/>